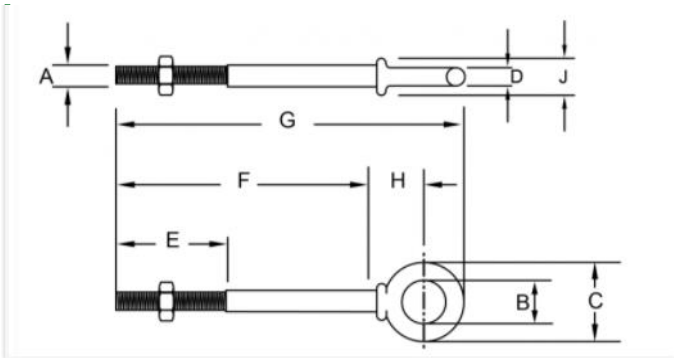
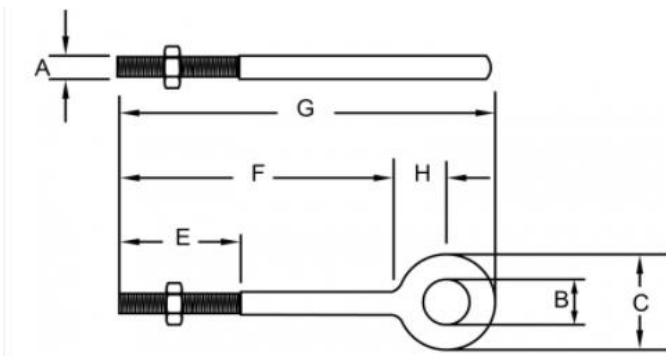


1. Heavy Duty Eye Bolt (Shoulder Type) Size



| Shank Diameter & Lenth/ Inch | Working Load Limit/Lbs | Weight per 100pcs/Lbs | A/ Inch | B/ Inch | C/ Inch | D/ Inch | E/ Inch | F/ Inch | G/ Inch | H/ Inch |
|------------------------------|------------------------|-----------------------|---------|---------|---------|---------|---------|---------|---------|---------|
| 1/4" x 2" | 500 | 6.6 | 0.25 | 0.5 | 0.88 | 0.19 | 1.5 | 2 | 2.94 | 0.5 |
| 1/4" x 4" | 500 | 9.1 | 0.25 | 0.5 | 0.88 | 0.19 | 2.5 | 4 | 4.94 | 0.5 |
| 5/16" x 2 -1/4" | 800 | 12.5 | 0.31 | 0.62 | 1.12 | 0.25 | 1.5 | 2.25 | 3.5 | 0.69 |
| 5/16" x 4 -1/4" | 800 | 18.8 | 0.31 | 0.62 | 1.12 | 0.25 | 2.5 | 4.25 | 5.5 | 0.69 |
| 3/8" x 2-1/2" | 1200 | 21.4 | 0.38 | 0.75 | 1.38 | 0.31 | 1.5 | 2.5 | 3.97 | 0.78 |
| 3/8" x 4 -1/2" | 1200 | 25.3 | 0.38 | 0.75 | 1.38 | 0.31 | 2.5 | 4.5 | 5.97 | 0.78 |
| 1/2"x 3-1/4" | 2200 | 42.6 | 0.5 | 1 | 1.75 | 0.38 | 1.5 | 3.25 | 5.12 | 1 |
| 1/2" x 6" | 2200 | 56.8 | 0.5 | 1 | 1.75 | 0.38 | 3 | 6 | 7.88 | 1 |
| 5/8" x 4" | 3500 | 68.6 | 0.62 | 1.25 | 2.25 | 0.5 | 2 | 4 | 6.44 | 1.31 |
| 5/8" x 6" | 3500 | 102.4 | 0.62 | 1.25 | 2.25 | 0.5 | 3 | 6 | 8.44 | 1.31 |
| 3/4" x 4-1/2 | 5200 | 144.5 | 0.75 | 1.5 | 2.75 | 0.62 | 2 | 4.5 | 7.44 | 1.56 |
| 3/4" x 6" | 5200 | 167.5 | 0.75 | 1.5 | 2.75 | 0.62 | 3 | 6 | 8.94 | 1.56 |
| 7/8" x 5" | 7200 | 225 | 0.88 | 1.75 | 3.25 | 0.75 | 2.5 | 5 | 8.46 | 1.84 |
| 1" x 6" | 10 000 | 366.3 | 1 | 2 | 3.75 | 0.88 | 3 | 6 | 9.97 | 2.09 |
| 1" x 9" | 10 000 | 422.5 | 1 | 2 | 3.75 | 0.88 | 4 | 9 | 12.97 | 2.09 |
| 1-1/4" x 8" | 15 200 | 650 | 1.25 | 2.5 | 4.5 | 1 | 4 | 8 | 12.72 | 2.47 |
| 1-1/4" x 12" | 15 200 | 795 | 1.25 | 2.5 | 4.5 | 1 | 4 | 12 | 16.72 | 2.47 |

2.Regular Eye Bolt Size Chart



TO BE CONTINUED

RMC

| Shank Diameter & Lenth/ Inch | Working Load Limit/Lbs | Weight per 100pcs/Lbs | A/ Inch | B/ Inch | C/ Inch | E/ Inch | F/ Inch | G/ Inch |
|------------------------------|------------------------|-----------------------|---------|---------|---------|---------|---------|---------|
| 1/4" x 2" | 500 | 8.2 | 0.25 | 0.5 | 1 | 1.5 | 2 | 3.06 |
| 1/4" x 4" | 500 | 11.7 | 0.25 | 0.5 | 1 | 2.5 | 4 | 5.06 |
| 5/16" x 2 -1/4" | 800 | 13.3 | 0.31 | 0.62 | 1.12 | 1.5 | 2.25 | 3.56 |
| 5/16" x 4 -1/4" | 800 | 25 | 0.31 | 0.62 | 1.25 | 2.5 | 4.25 | 5.56 |
| 3/8" x 2-1/2" | 1200 | 23.3 | 0.38 | 0.75 | 1.5 | 1.5 | 2.5 | 4.12 |
| 3/8" x 4 -1/2" | 1200 | 29.5 | 0.38 | 0.75 | 1.5 | 2.5 | 4.5 | 6.12 |
| 1/2"x 3-1/4" | 2200 | 50.3 | 0.5 | 1 | 2 | 1.5 | 3.25 | 5.38 |
| 1/2" x 6" | 2200 | 66.1 | 0.5 | 1 | 2 | 3 | 6 | 8.12 |
| 5/8" x 4" | 3500 | 103.1 | 0.62 | 1.25 | 2.5 | 2 | 4 | 6.69 |
| 5/8" x 6" | 3500 | 118.2 | 0.62 | 1.25 | 2.5 | 3 | 6 | 8.69 |
| 3/4" x 4-1/2 | 5200 | 168.6 | 0.75 | 1.5 | 3 | 2 | 4.5 | 7.69 |
| 3/4" x 6" | 5200 | 184.5 | 0.75 | 1.5 | 3 | 3 | 6 | 9.19 |
| 7/8" x 5" | 7200 | 270 | 0.88 | 1.75 | 3.5 | 2.5 | 5 | 8.75 |
| 1" x 6" | 10 000 | 421 | 1 | 2 | 4 | 3 | 6 | 10.31 |
| 1" x 9" | 10 000 | 468.5 | 1 | 2 | 4 | 4 | 9 | 13.31 |
| 1-1/4" x 8" | 15 200 | 750 | 1.25 | 2.5 | 5 | 4 | 8 | 13.38 |
| 1-1/4" x 12" | 15 200 | 900 | 1.25 | 2.5 | 4.5 | 4 | 12 | 16.72 |

Contact with our sales: sales@tdtechnology.com.cn for any further questions.
We are 24/7 available to be supportive for your business !