



Pony Testing International Group



扫描二维码
关注谱尼测试

Test Report

No.: GMC1UPJX59229504

Date: 2018.03.12

Page 1 of 5

Applicant: Carboline Dalian Paint Company

The following sample(s) was/were submitted and identified on behalf of the client as:

Sample Name: Carbothane 133 HB White F856

Supplier Name: Carboline Dalian Paint Company

Sample Description: Paint

Sample Received Date: 2018.03.06

Testing Period: 2018.03.06 To 2018.03.12

Test Requested: RoHS Directive 2011/65/EU & (EU)2015/863 Annex II

- Test Methods:
- (1) IEC 62321-5 Edition 1.0:2013 method, Lead Analysis is performed by AAS
 - (2) IEC 62321-5 Edition 1.0:2013 method, Cadmium Analysis is performed by AAS
 - (3) IEC 62321-4 Edition 1.0:2013 method, Mercury Analysis is performed by ICP-OES
 - (4) IEC62321-7-2 Edition 1.0:2017 method, Hexavalent Chromium Analysis is performed by UV-Vis
 - (5) IEC 62321-6 Edition 1.0:2015 method, PBBs and PBDEs Analysis is performed by GC-MS

Test Result: Please refer to next page(s)

Approved by: *Wang Jun*



Pony Testing International Group Co., Ltd.
Address: Yingzhi Building, No 49-3 Suzhou Street, Haidian, Beijing.
PONY-BG136-2-902-2-2017A

Code: ew5dtz

Beijing Lab: (010)82618116	Changchun Lab: (0431)85150908	Shijiazhuang Lab: (0311)85376660	Wuhan Lab: (027)8397127
Shanghai Lab: (021)64851999	Dalian Lab: (0411)87336618	Xian Lab: (029)89668785	Hefei Lab: (0551)63443474
Qingdao Lab: (0532)88700866	Haerbin Lab: (0451)88104651	Huhehaote Lab: (0471)3450025	Guangzhou Lab: (020)89222410
Shenzhen Lab: (0755)26050909	Tianjin Lab: (022)27360730	Zhengzhou Lab: (0371)69350670	Hangzhou Lab: (0571)87219096
Suzhou Lab: (0512)62947900	Xinjiang Lab: (0991)8664186	Ningbo Lab: (0574)87736499	Xiamen Lab: (0592)5568046
			Chengdu Lab: (028)87703708



Pony Testing International Group



扫描二维码
关注谱尼测试

Test Report

No.: GMC1UPJX59229504

Date: 2018.03.12

Page 2 of 5

Test Result (Unit: mg/kg)

Test Item	MDL	Test Result	RoHS Limit
Lead (Pb)	1	N.D.	1000
Cadmium (Cd)	1	N.D.	100
Mercury (Hg)	1	N.D.	1000
Hexavalent Chromium (Cr ⁶⁺)	8	N.D.	1000
Sum of PBBs	—	N.D.	1000
Bromobiphenyl	5	N.D.	—
Dibromobiphenyl	5	N.D.	—
Tribromobiphenyl	5	N.D.	—
Tetrabromobiphenyl	5	N.D.	—
Pentabromobiphenyl	5	N.D.	—
Hexabromobiphenyl	5	N.D.	—
Heptabromobiphenyl	5	N.D.	—
Octabromobiphenyl	5	N.D.	—
Nonabromobiphenyl	5	N.D.	—
Decabromobiphenyl	5	N.D.	—
Sum of PBDEs	—	N.D.	1000
Bromodiphenyl ether	5	N.D.	—
Dibromodiphenyl ether	5	N.D.	—
Tribromodiphenyl ether	5	N.D.	—
Tetrabromodiphenyl ether	5	N.D.	—
Pentabromodiphenyl ether	5	N.D.	—
Hexabromodiphenyl ether	5	N.D.	—
Heptabromodiphenyl ether	5	N.D.	—
Octabromodiphenyl ether	5	N.D.	—
Nonabromodiphenyl ether	5	N.D.	—
Decabromodiphenyl ether	5	N.D.	—

- Note:
- (1) "—" = Does not stipulate
 - (2) N.D. = Not Detected (<MDL)
 - (3) MDL = Method Detection Limit
 - (4) The most allowable limit value reference to RoHS Directive 2011/65/EU & (EU)2015/863 Annex II
 - (5) The mixing sample test was performed as client's request. Result obtained only gives informality value and does not represent individual sample material



Hotline 400-819-5688 www.ponytest.com

Pony Testing International Group Co. Ltd.
Address: Yingzhi Building, No.49-3 Sushou Street, Haidian, Beijing
PONY-BG186-2-002-2-2017A

Beijing Lab: (010)82618116	Changchun Lab: (0431)85150908	Shijiazhuang Lab: (0311)85376660	Wuhan Lab: (027)83097127
Shanghai Lab: (021)64851999	Dalian Lab: (0411)87336618	Xian Lab: (029)189608785	Defei Lab: (0551)62883874
Qingdao Lab: (0532)88706866	Haerbin Lab: (0451)88194651	Huhehaote Lab: (0471)35450025	Guangzhou Lab: (020)89224319
Shenzhen Lab: (0755)26050909	Zhengzhou Lab: (0371)69250670	Hangzhou Lab: (0571)87219096	Xiamen Lab: (0592)3568048
Tianjin Lab: (022)27360730	Suzhou Lab: (0512)162997900	Xinjiang Lab: (0991)6684186	Ningbo Lab: (0574)87736499
			Chengde Lab: (028)87702708



扫描二维码
关注谱尼测试



Pony Testing International Group

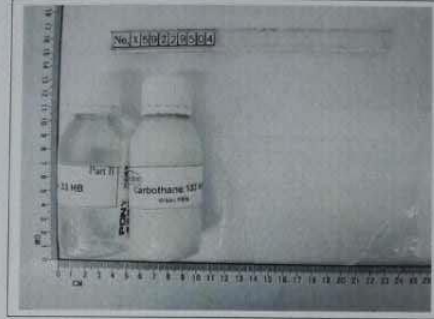
Test Report

No.: GMC1UPJX59229504

Date: 2018.03.12

Page 3 of 5

Sample No. &Photo:



Pony authenticate the photo on original report only
The page below is blank

511
PL
400
Ino



Hotline 400-819-5688 www.ponytest.com

Pony Testing International Group Co. Ltd.
Address: Yingzhi Building, No.49-3 Suzhou Street, Haidian, Beijing
PONY-BG186-2-602-2-2017A

Beijing Lab: (010)82618116	Changchun Lab: (0431)85150908	Shijiazhuang Lab: (0311)85376660	Wuhan Lab: (027)83097127
Shanghai Lab: (021)64851999	Dalian Lab: (0411)87336618	Xiao Lab: (029)89608785	Hebei Lab: (0551)63843478
Qingdao Lab: (0532)88706866	Haerbin Lab: (0451)88104651	Huhehaote Lab: (0471)3450025	Guangzhou Lab: (020)89224119
Shenzhen Lab: (0755)26959909	Zhengzhou Lab: (0371)69259670	Hangzhou Lab: (0571)87219096	Xiamen Lab: (0592)5568048
Tianjin Lab: (022)27360730	Suzhou Lab: (0512)62997900	Xinjiang Lab: (0991)6684186	Ningbo Lab: (0574)87736499
			Chengdu Lab: (028)87702708



Measurement Flow-chart

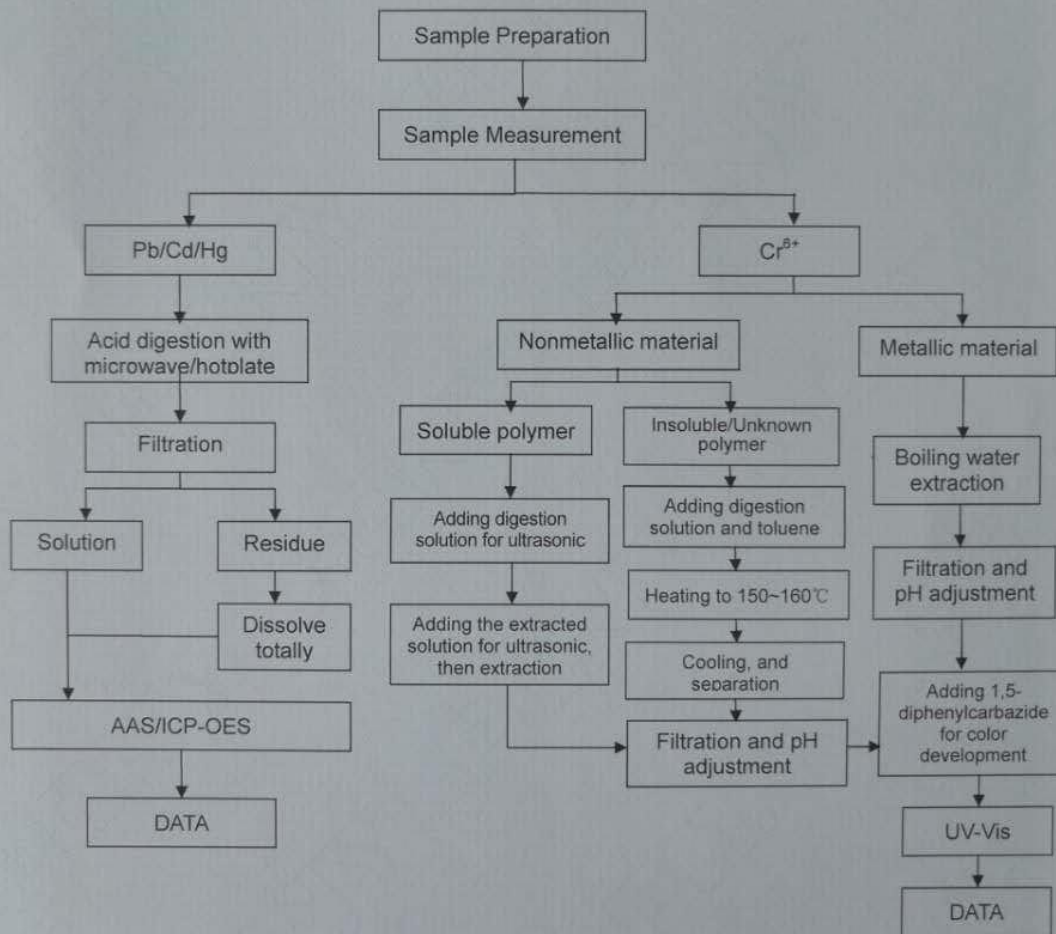
Tested by: Liu Jianbo

Checked by: Li Libing

Person in charge of the lab: Yu Jianwei

These Samples Were Dissolved Totally By Pre-conditioning Method According To Below Flow Chart.

(Cr⁶⁺ Test Method Excluded)





Test Report

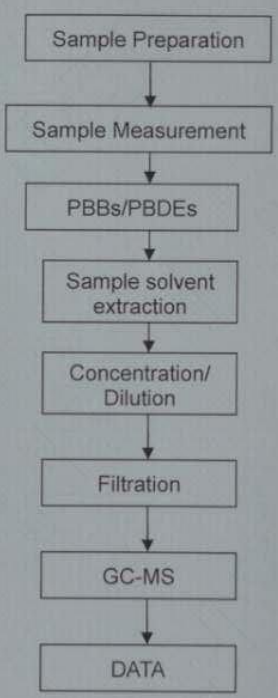
No.: GMC1UPJX59229504

Date: 2018.03.12

Page 5 of 5

Measurement Flow-chart

Tested by: Duo Zijia
Checked by: Li Libing
Person in charge of the lab: Yu Jianwei



End of Report

