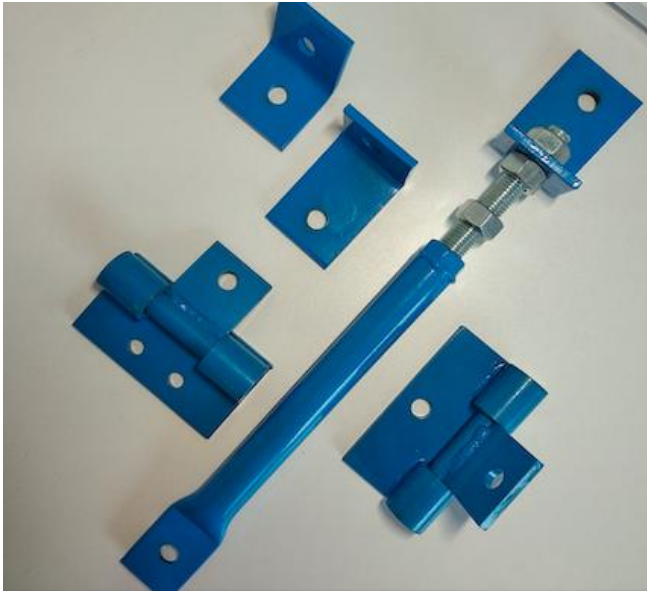


Adjustable Bracket Specification



Description	Adjustable Bracket For Climbing Wall
Total Length	300mm–680mm, the total length would be customized due to project requirement
Surface	Powder Coating, Cr3+ Zinc Plated
Material	S235JR
MOQ	3 000 Sets
Tube Length not included	150mm–600mm, the tube length is customized as per project need
Thread Rod Diameter	M16
Angle Plate Size	100mm x50mm x 50mm, 90°, Size and angle are also customized as per your climbing wall requirement
Tube Diameter	25mm–32mm
Application	Connection between plywood and the steel structure

NOTE:

1. As a manufacturer, we not only produce carbon steel, if you need stainless steel, we can of course produce and offer a good solution.
2. Any details you would like to discuss with our sales, just drop us a email, we would get back to you within 12 Hr by most.